

# CARDIOVISION

## MOBILE CARDIAC TELEMETRY

**REAL-TIME 100% OUT-PATIENT ECG TELEMETRY  
FROM ANY OUTPATIENT LOCATION TO HOSPITAL**



**Includes Full Disclosure ECG and Holter**



System Rental Program Allows Your Facility to  
Receive the Premier Global Reimbursement

**(APC 0209 or CPT 93229 & CPT 93228)**



- **3-Electrodes = 6-Lead ECG**
- **No matter where the outpatient is (home, work, car, restaurant, park) the real-time ECG is immediately seen at the hospital's PC ECG monitoring station.**
- **ECG is reviewed at any time by Cardiologist for any Patient time period by real Full Disclosure ECG or real Holter ECG format. Cardiologist can review data from remote location; such as, medical office building, home, golf course, etc..... PC, Notebook, or iPhone.**
- **Hospital can simultaneously monitor from 8 to 96 mobile Telemetry Outpatients.**



Physician's Office PC Review



Remote Hospital / Medical Facility Holter Lab



Physician's iPhone

**Real-Time Outpatient ECG  
Up to 32 Patients per PC**



Hospital / Medical Facility  
Central ECG Station



300-2 Tele-Outpatient ECG



300-2 Tele-Outpatient ECG



300-2 Tele-Outpatient ECG



300-2 Tele-Outpatient ECG



300-2 Tele-Outpatient ECG



300-2 Tele-Outpatient ECG



300-2 Tele-Outpatient ECG



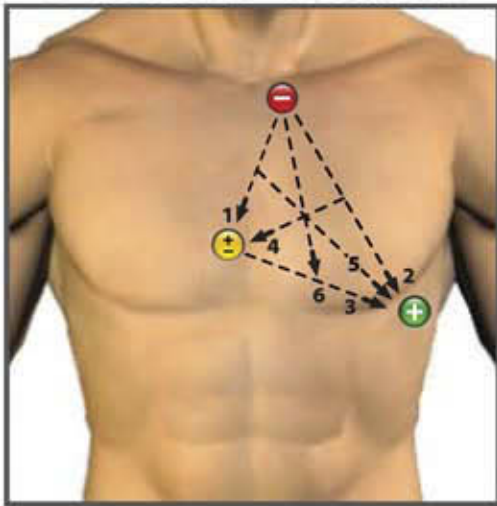
300-2 Tele-Outpatient ECG



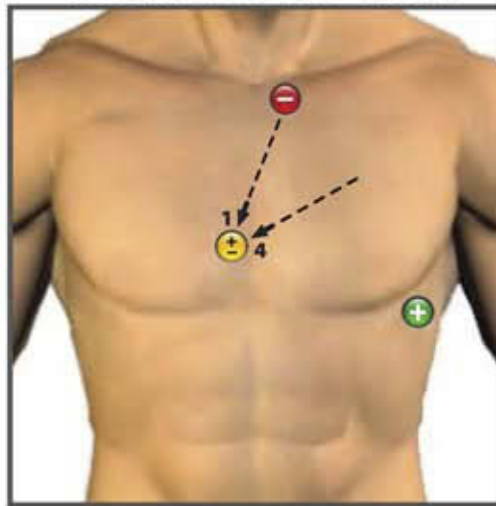
300-2 Tele-Outpatient ECG

# REAL 100% OUT-PATIENT TELEMETRY

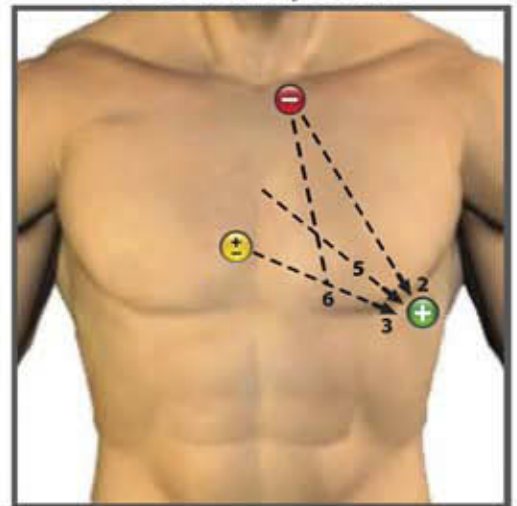
3 -Electrodes = 6-Lead ECG



CMI and mV1 for P-Waves



ST and Arrhythmias

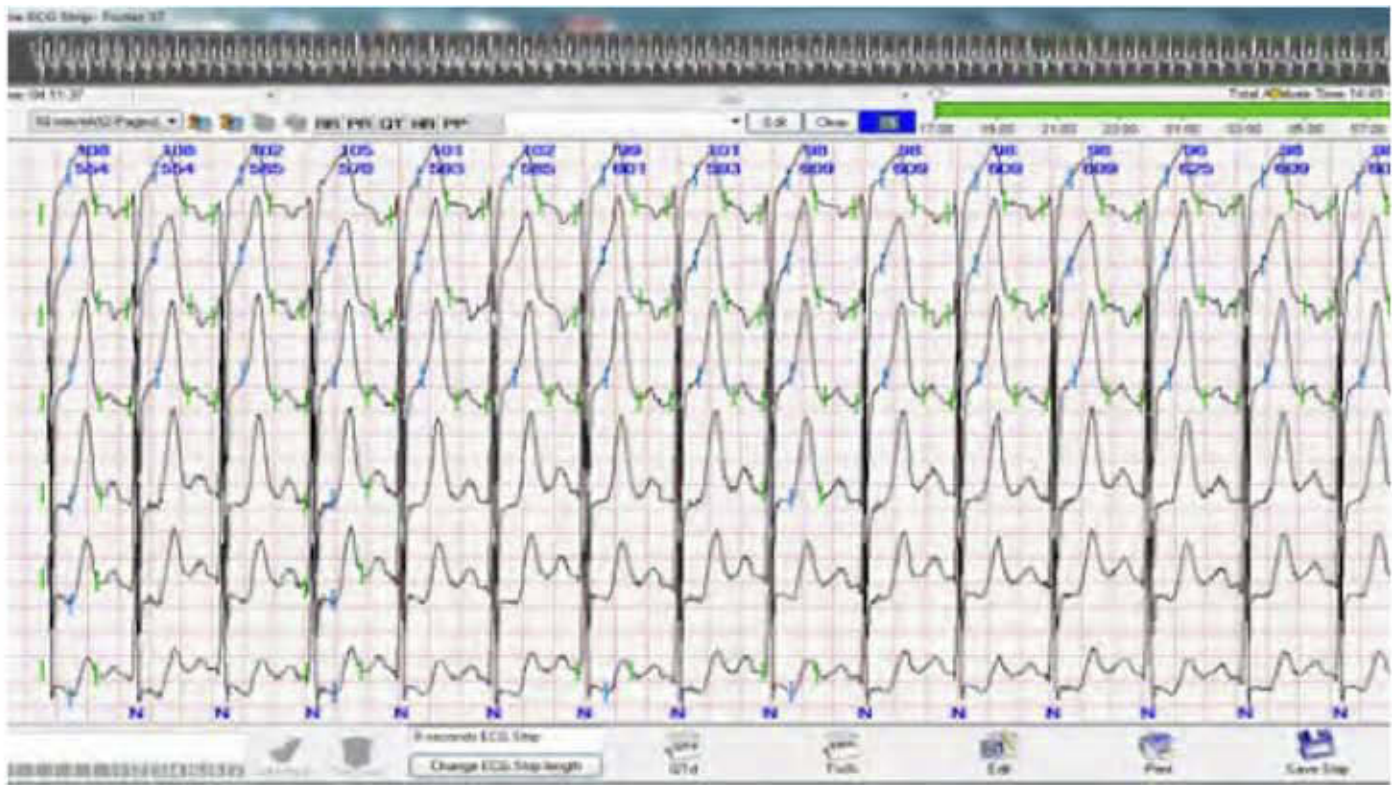


**Ambulatory Patient At Home, Work,  
Everywhere Within Cell Coverage Area.**

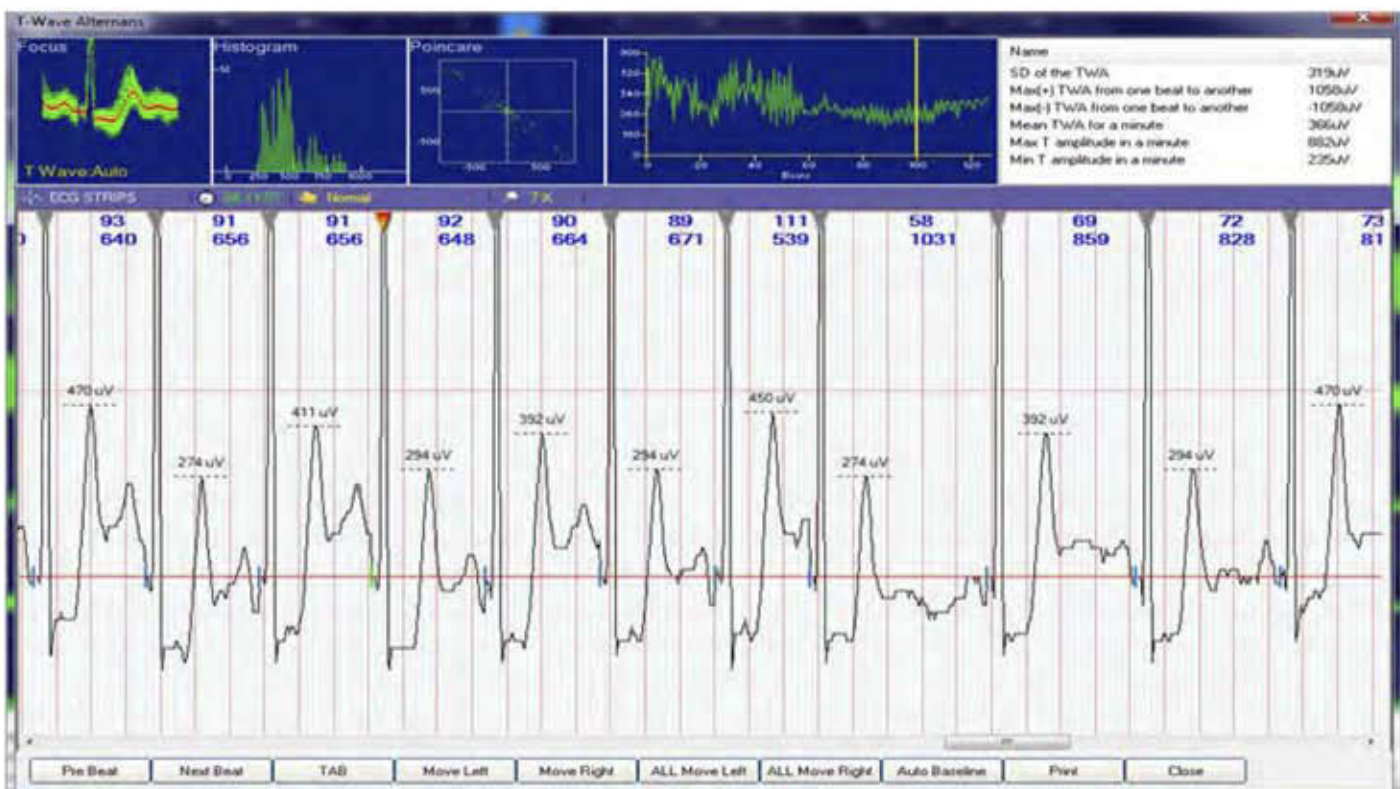
**Hospital / Medical Facility.**

- **Real-Time ECG from Patient's home to Hospital or Medical Facility.**
- **From 1 to 32 Patients per single hospital PC.**
- **Solution to hospital Re-Admission problem.**
- **Best Arrhythmia and ST Analysis you have ever seen.**
- **Patient is Ambulatory in home, work, etc., environment.**
- **Holter ECG backup of all ECG data for up to 30 days.**

# 3-Electrode = 6-Lead ECG ST Depression



# ST with T-Wave Alternans



# Solve 2 Cardiology ECG Monitoring Problems

## 1. 30-Day Re-Admissions for Heart Failure and MI Patients



## 2. Better Utilization of Hospital's CATH LAB

# Need for ECG Evidence

for significant and transient ECG abnormalities:

- A-Fib & Flutter
- Asystole and Blocks
- T-Wave Alternans
- Ablation follow-up
- Stroke Risk Management
- Sustained V-Tach
- ST Segment
- QTc Elongation
- Drug Therapy follow-up
- Indication for Sleep Apnea