



# CardioVision Wi-Fi Telemetry System

Compatible with your Current Network

Real - Time Arrhythmia Detection

Instant 6-Lead ECG Enlargement

Expandable to 144 Channels

Total Recall Full Disclosure

Holter Analysis

HL-7



| Time | 20:00 | 22:00 | 00:00 | 02:00 |
|------|-------|-------|-------|-------|
| HR   | 102   | 102   | 98    | 101   |
| SpO2 | 585   | 585   | 609   | 593   |
| PR   |       |       |       | 632   |



Any Device.... Any Time....



## CardioVision Telemetry System

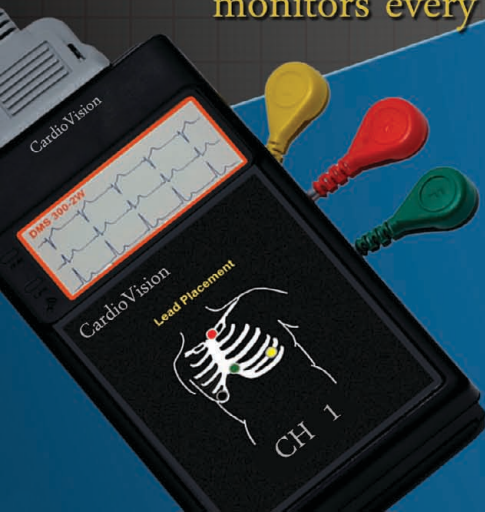
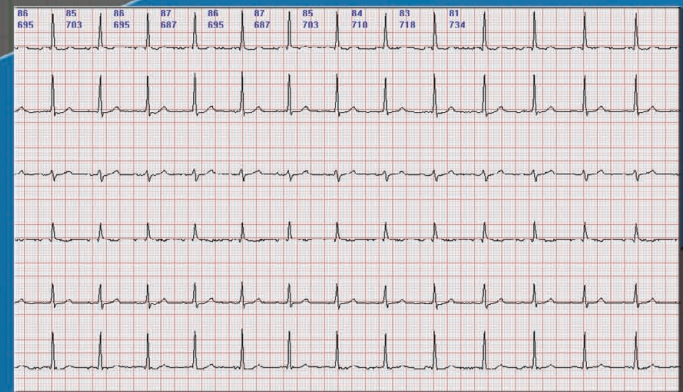
The CardioVision Telemetry System is the next generation of patient monitoring. In addition to providing state of the art real-time telemetry, CardioVision doubles as a full disclosure holter monitor. Now for the first time, one telemetry system can do it all. Comprehensively combine all your hospital ECG requirements into a single network. Access your data anytime and anywhere you have an internet connection. Whether at the nurses station, holter lab, doctors office, or at home, patients can be remote viewed from a satellite station, laptop, phone, or other mobile device.

## How It Works.....

The CardioVision System continuously monitors every patient heartbeat with its Wi-Fi Transmitter.

Only 3 lead wires are

required to receive 6 distinct ECG views of the heart. This patient data is displayed live in real time as well as stored in a full disclosure file, which can be archived and analysed by a Cardiologist using the companion CardioScan program.







Doctor at Office



Doctor at Home



Holter Lab



Tablets

Phones



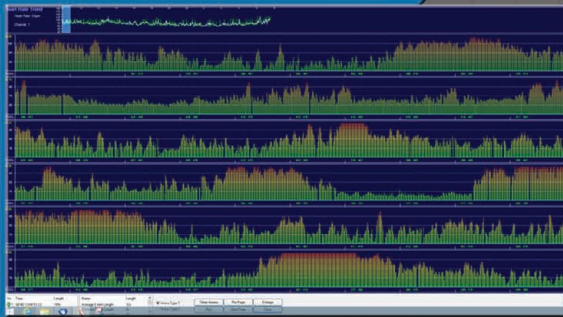
# One Telemetry System That Does it All!



Full Disclosure

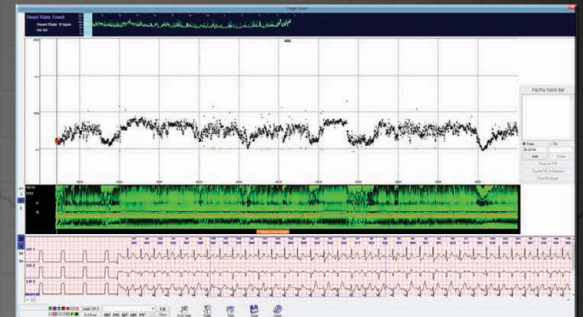


ECG Enlargement

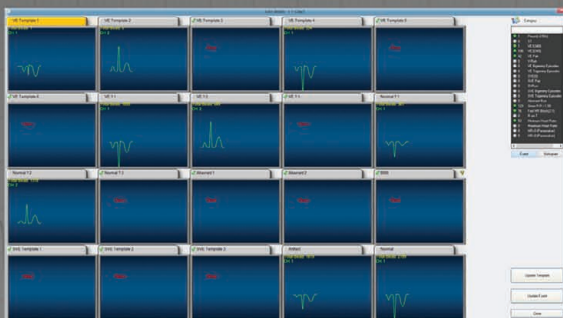


Sleep Apnea

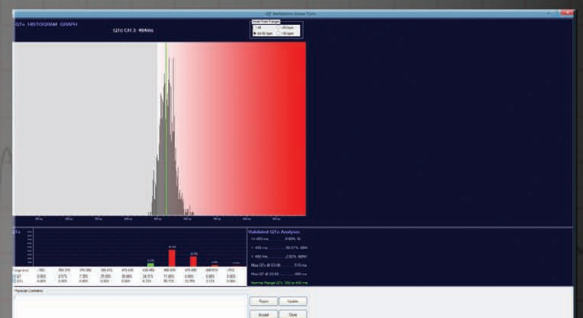
The CardioScan Holter Analysis Software is an integral part of the CardioVision System. With over 16 individualized tests and customizable reports



Heartbeat Trending



Edit Beats



QT Validation